

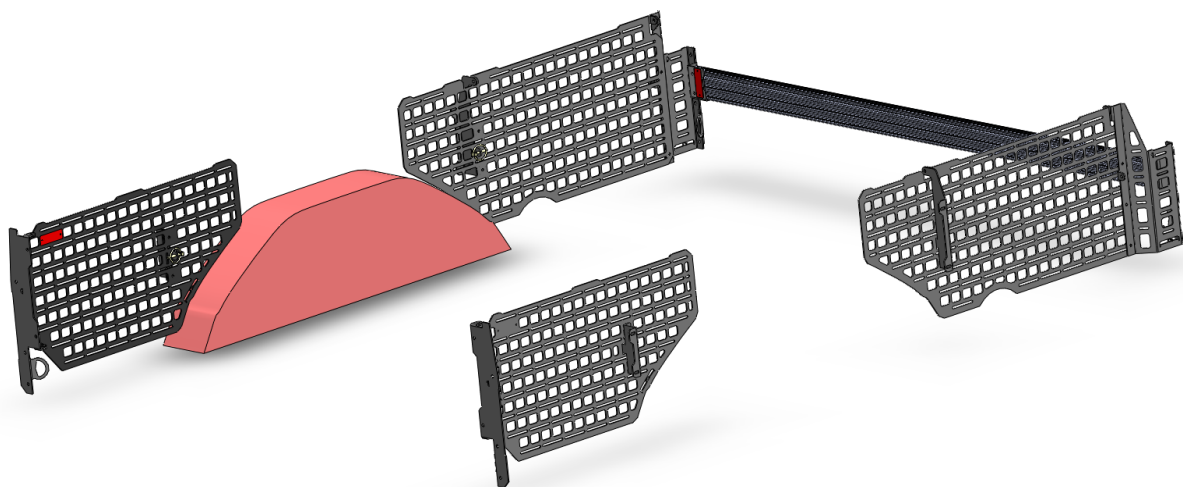


connect@walterseandp.com

Phone: 812-202-2194

Hope, In.

'73- '87 Chevrolet C/K Series Truck Bed GridLox System



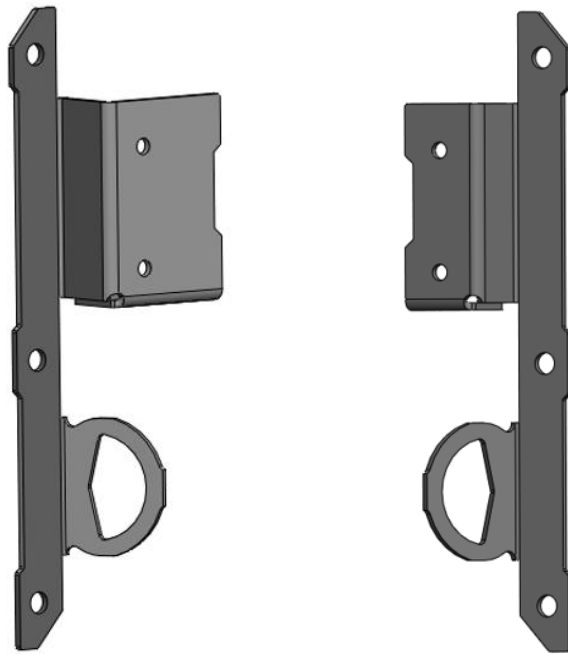
Cargo organization and securement systems are popular in the off-roading, camping, and overlanding segments. These systems are commonly available as direct fit kits for late model pickup trucks and SUVs however direct fit options for vintage pickup trucks have been found to be lacking in the market. Walters Engineering and Performance LLC has developed this system, incorporating principals of the military's modular light load carrying equipment (MOLLE) system, to provide a direct fit option for 73-87 C/K Series Chevrolet trucks. Our system is designed to aid in organization and securement of light to medium weight gear including but not limited to shovels, fire extinguishers, tool/first-aid kits, fuel/water tanks, coolers, traction boards, bicycles, fishing poles, etc. Our system also includes built in, four corner tie-down points (when paired with our header panel accessory bar), a feature that we feel has been sorely missed in the C/K series Chevrolet trucks. Additionally, our GridLox system utilizes a hinged mounting method which provides easy access to both sides of the panels for attaching things as well as making access to attached items easier when standing outside of the bed.

Precautions: While we're confident in the strength and durability of the GridLox system, we do ask that the user apply good judgement on the weight and size of items they attach to it. Examples of items we wouldn't recommend attaching to it would be large/heavy items such as engine blocks, motorcycles, children, child car seats, mothers-in-law, etc. It would also be important to consider if the attached item(s) could cause any hazardous or unsafe driving conditions. Again, please apply good judgement when deciding what and how to attach items to the system. NOTE: The hinge mounted panels should be locked in their stowed position when vehicle is moving.

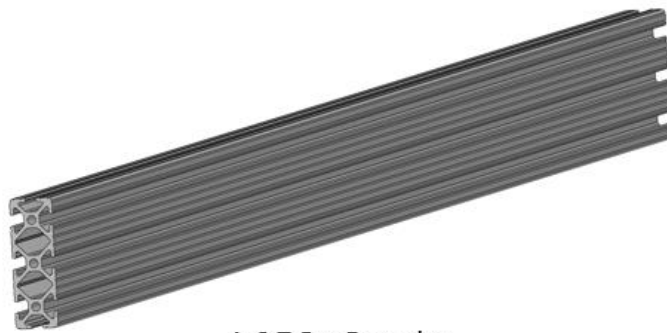
Terms and Conditions

Walters Engineering and Performance LLC's products are designed and fabricated for off-road use only. Use of our products is at the consumer's own risk. Before using any such product, Walters Engineering and Performance LLC. recommends that you check your local and state vehicle laws to be sure that your contemplated use is permitted in the applicable jurisdiction. **IN NO EVENT WILL WALTERS ENGINEERING AND PERFORMANCE LLC BE LIABLE FOR ANY INCIDENTAL, CONSEQUENTIAL OR INDIRECT DAMAGES OR INJURIES.**

Contents – GridLox Header Panel Accessory Bar



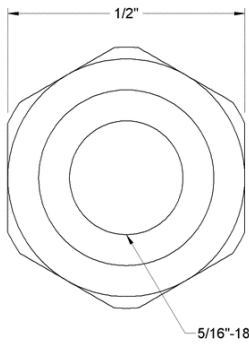
Driver Side Header Panel Adapter Bracket Passenger Side Header Panel Adapter Bracket



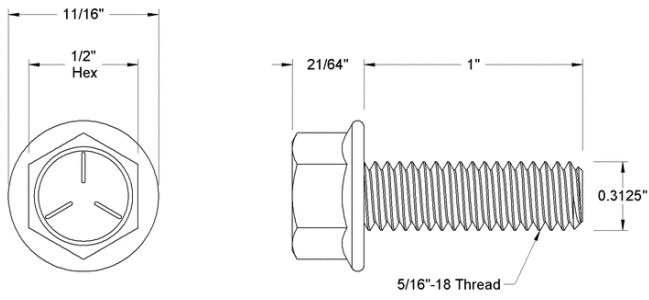
1x3 T-Bar Extrusion

- Driver Side Header Panel Bracket
- Passenger Side Header Panel Bracket
- 1"x3" Slotted T-Bar Aluminum Extrusion
- Fasteners

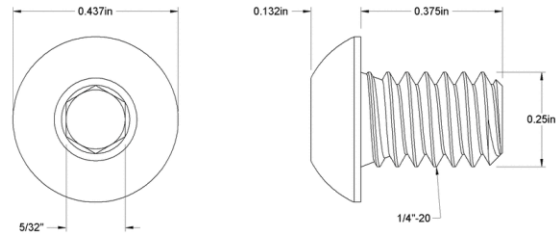
- 5/16" nylock nuts x7



- 5/16"x1" flanged hex head bolts x7



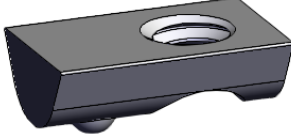
- 1/4" x 3/8" pan head, hex key screw x5



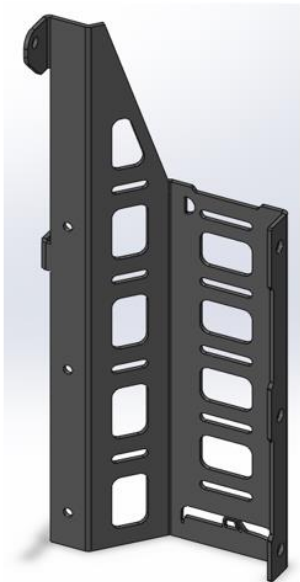
- Slide in T-slot nuts x5



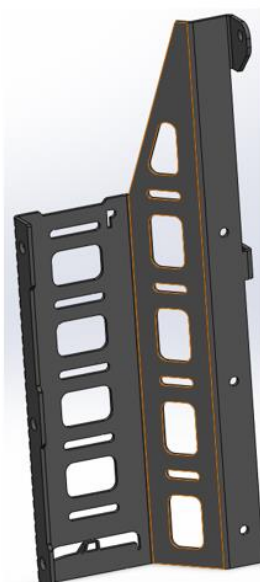
- Drop-in T-slot nuts x5



Contents – Bedside Hinged Organization System



Driver Side Header Panel Adapter



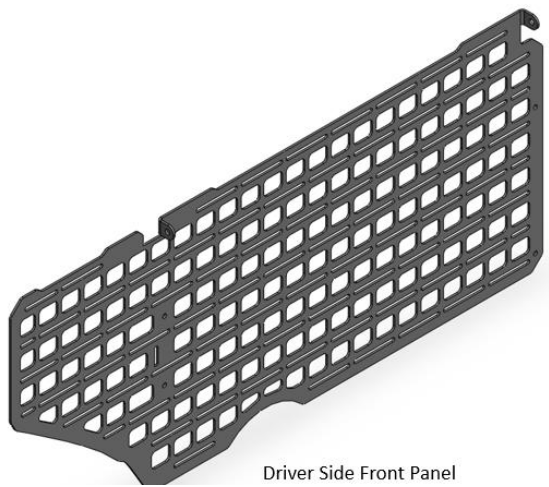
Passenger Side Header Panel Adapter



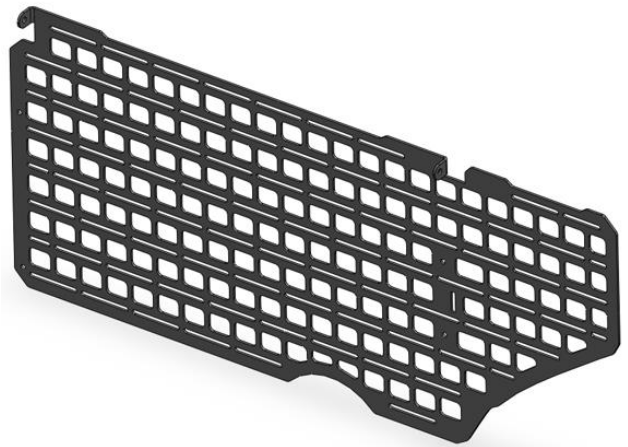
Driver Side Bed End Adapter



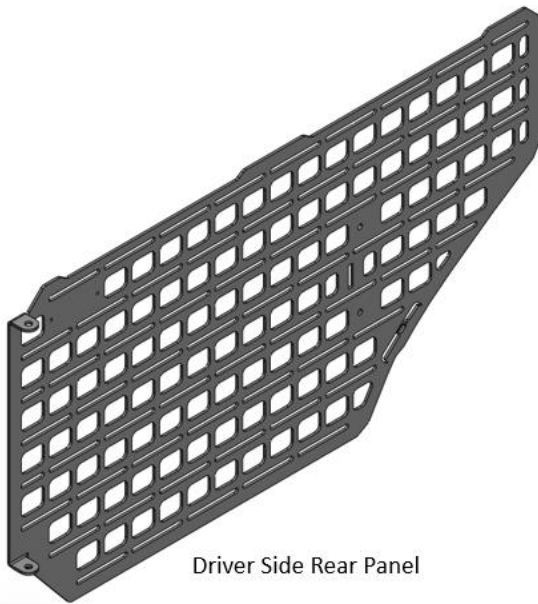
Passenger Side Bed End Adapter



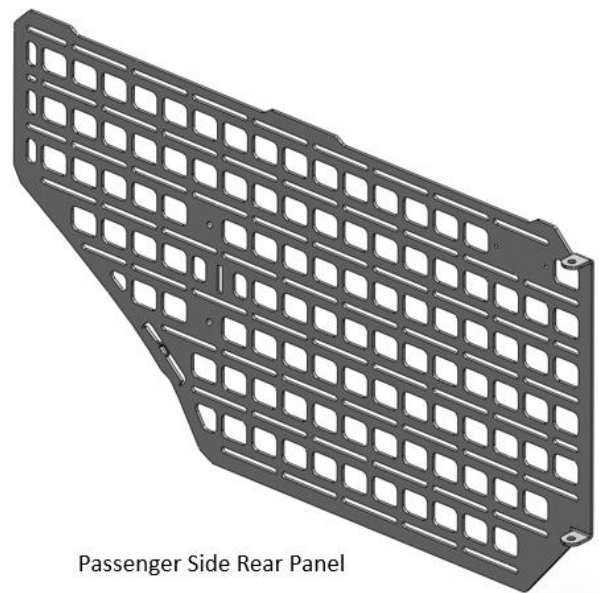
Driver Side Front Panel



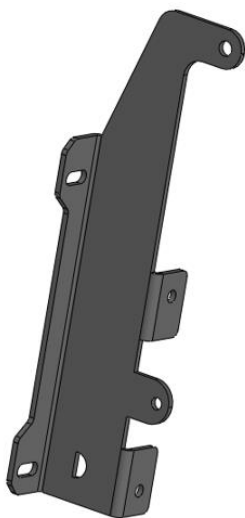
Passenger Front Panel



Driver Side Rear Panel



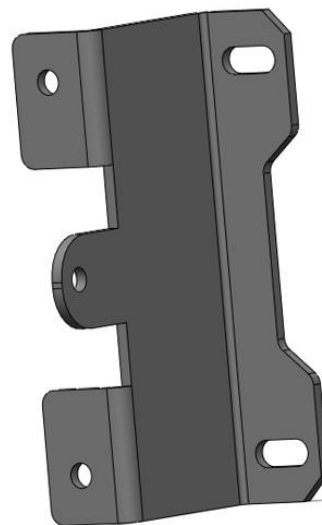
Passenger Side Rear Panel



Driver Hinge Mount



Passenger Hinge Mount



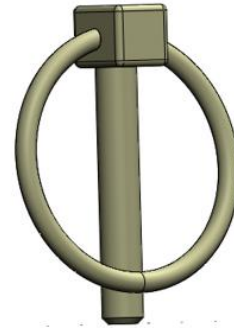
Rear Jog Mount



Panel Prop Bracket



Magnetic Catch Disc

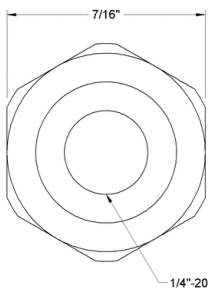


Linch Pin

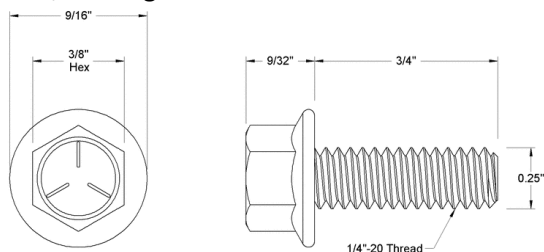
- Driver Side Header Panel Adapter Bracket
- Passenger Side Header Panel Adapter Bracket
- Driver Side Bed End Adapter
- Passenger Side Bed End Adapter
- Passenger Front GridLox Panel
- Driver Front GridLox Panel
- Passenger Rear GridLox Panel
- Driver Rear GridLox Panel
- Driver Hinge mount
- Passenger Hinge mount
- Rear Jog Mounts x2
- Panel Prop Bracket x2
- Linchpins x4
- Magnetic catch discs x8

- Fasteners

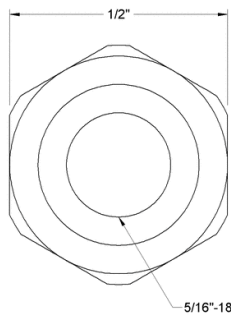
- ¼" nylock nuts x13



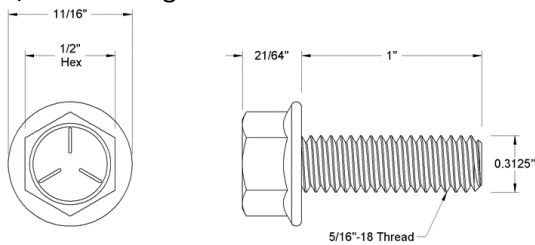
- ¼"x3/4" flanged hex head bolts x23



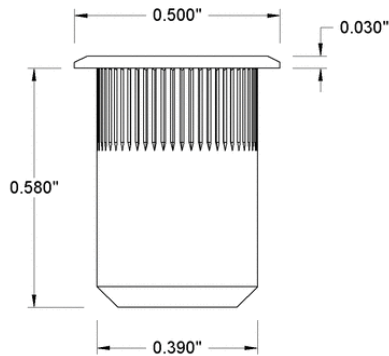
- 5/16" nylock nuts x15



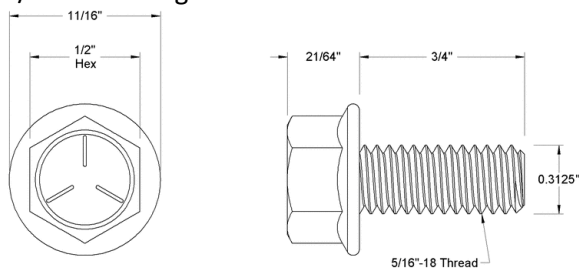
- 5/16" x 1" flanged hex head bolts x7



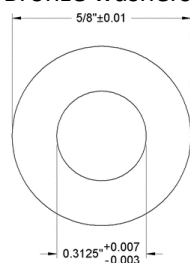
- 1/4"-20 rivet nuts x19



- 5/16" x 3/4" flanged hex head bolts x9



- Bronze washers x9

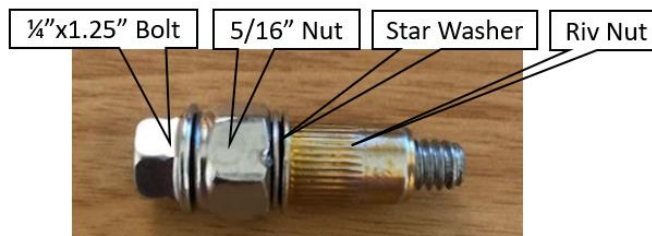


Some notes on rivet nut installation – If you're inexperienced with installing riv nuts, we recommend researching the proper procedure and technique for their installation. There are many good resources for this on the internet. Riv nut installation tools such as the one shown below can be purchased at a reasonable price and work well for our kit installation. Additionally, you will find examples online where people have created DIY riv nut installation tools such as the example we show below. Again, please make the best call for your project and skill level about which option would be best for you.

- The riv nuts supplied in this kit are meant to be installed in a **25/64"** hole

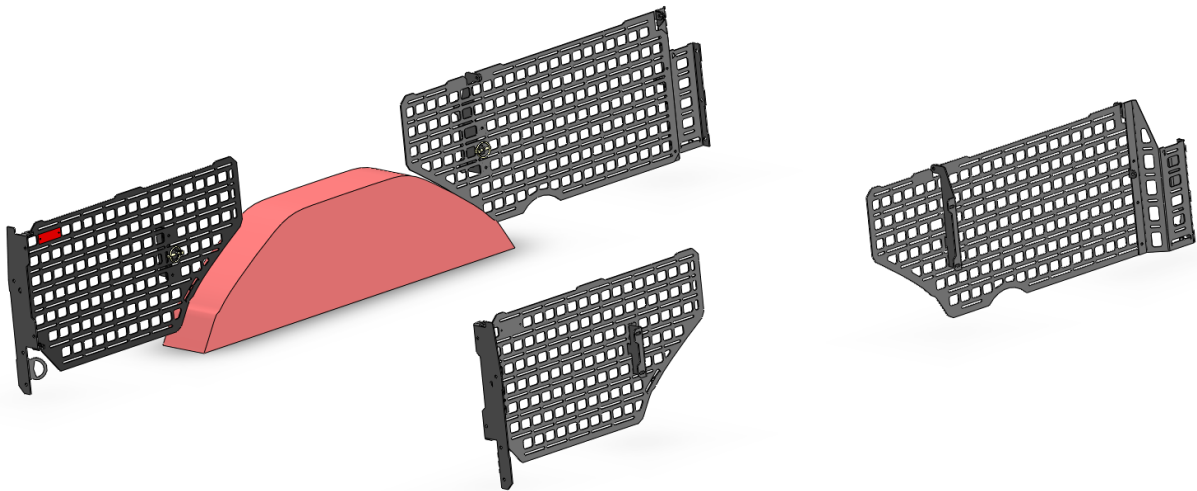


Rivet Nut Installation Gun Example

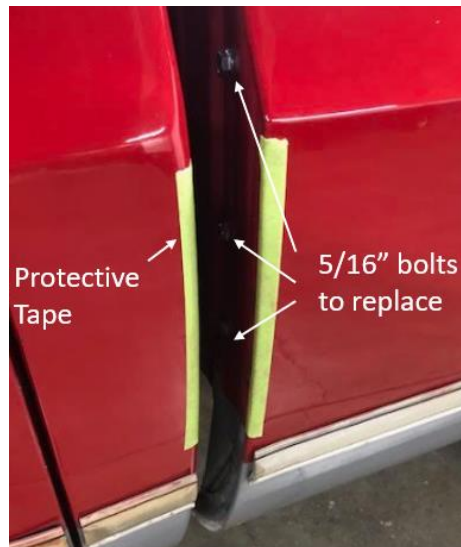


DIY Rivet Nut Installation Tool

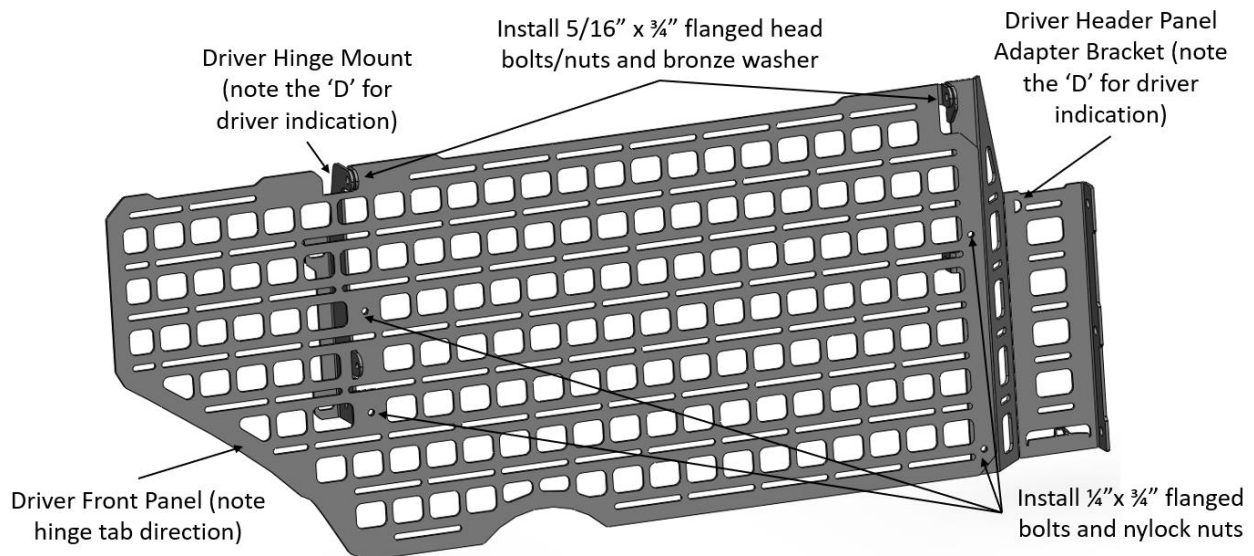
GridLox Hinged Panel System Installation

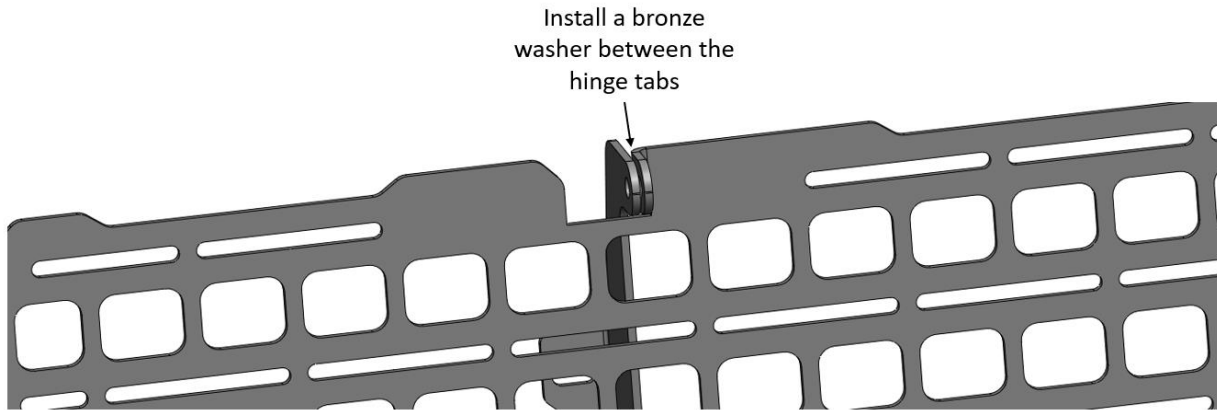


1. Start by removing the 3 lower 5/16" bolts holding the bed header panel to the bed sides. Replace these with the supplied, 5/16" x 1" bolts.

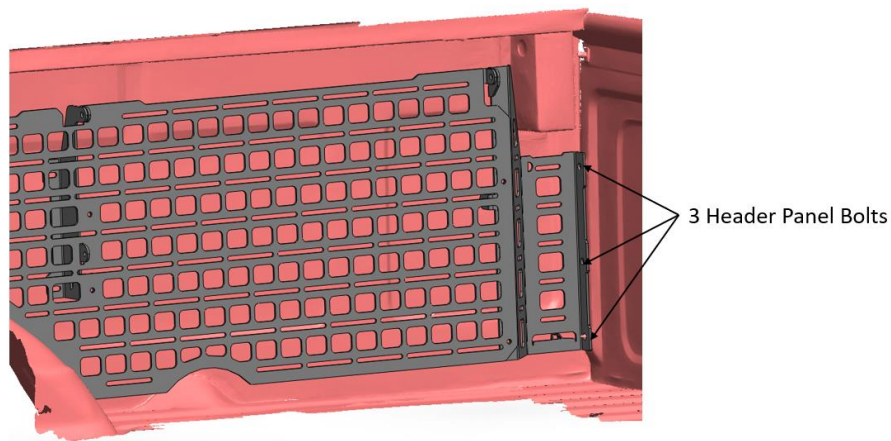


- a. A few helpful tips for replacing these bolts...
 - i. With the bed on the truck, they are in a tight spot. To avoid scratching paint in this area, it's helpful to put strips of tape on the cab/bed to protect it.
 - ii. Use a ratchet with a socket to break the bolts loose and back them out some. Then switch to a wrench, ideally a ratcheting wrench. The reason for this is if you back the bolts all the way out with a ratchet/socket, the ratchet/socket will become pinched between the bed and the cab and not be able to be removed.
 - iii. If the existing bolts are rusty/crusty, it's a good idea to give them a shot of penetrating oil before removing them, especially on the thread side sticking through the inside of the bed
 - iv. If the threads of the nuts in this location are in poor condition, it could help to chase them with a 5/16-18 tap before installing the new bolts
2. Assemble the driver side front panel assembly as shown by installing the supplied $\frac{1}{4}$ " x $\frac{3}{4}$ " flanged head bolts and nylock nuts in the locations indicated. Also install a $\frac{5}{16}$ " x $\frac{3}{4}$ " bolt, bronze washer and nylock nut at the locations shown. The Bronze washer goes in between the hinge tabs (see second picture below). Note: the header panel adapter bracket and hinge mount both have a 'D' or 'P' on them to indicate which side they are for, passenger or driver.

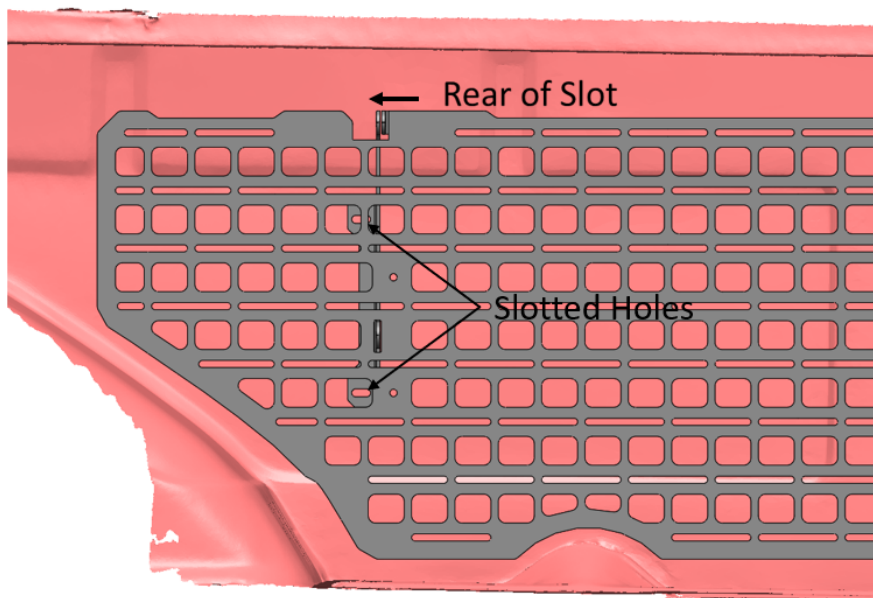




3. Mount the assembly onto the 3 header panel bolts as shown and secure with the supplied 5/16" nylock nuts.

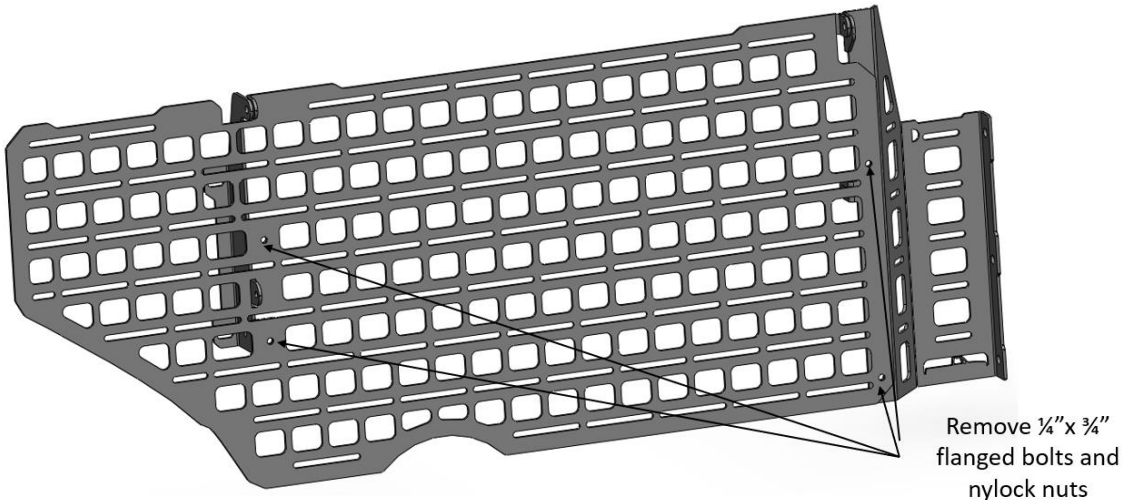


4. Using the slotted holes of the hinge mount bracket, mark the location in the truck bed for drilling holes for riv nut installation. The holes should be marked toward the rear of the slots. This allows for the assembly to be able to be shifted rearward if a header panel accessory bar kit should be installed later.

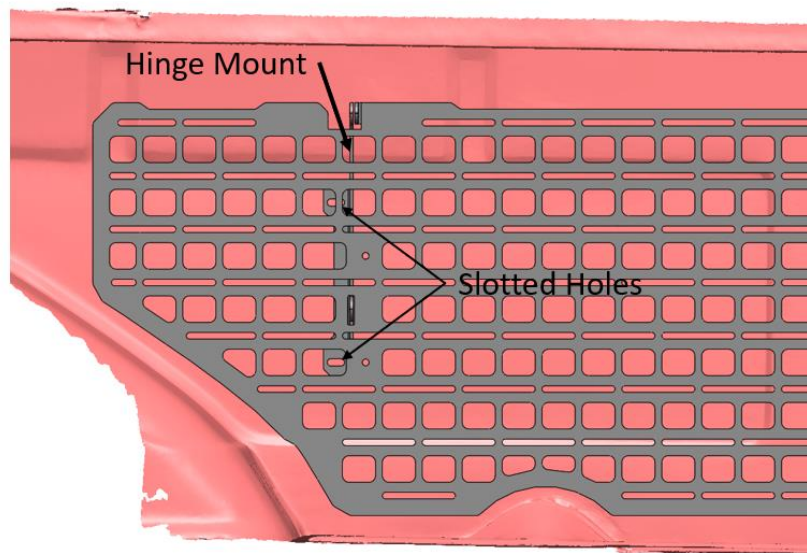


5. Remove the entire panel assembly, drill 25/64" holes in the marked locations and install the riv nuts. **CAUTION** – When drilling holes, make sure bit does not push through too far and dimple the outer bed skin.

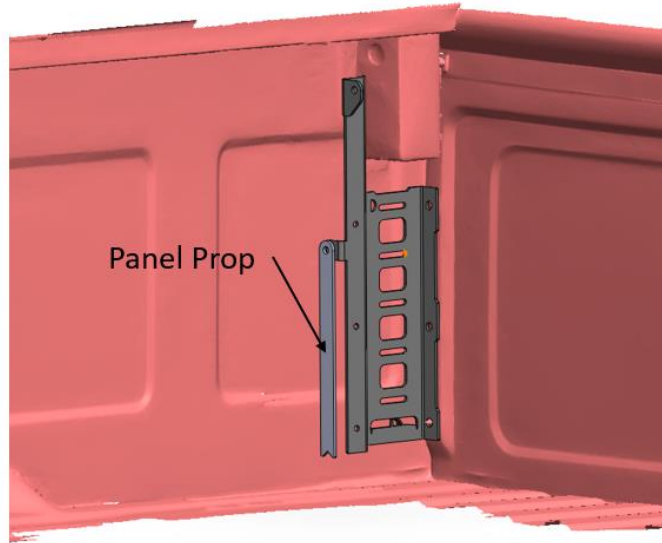
- Remove the four 1/4" bolts/nuts shown, reinstall the assembly onto the header panel bolts, and secure with 5/16" nuts as in step 3. Use two of the 1/4" x 3/4" bolts removed from the panel to attach the hinge mount to the side of the bed where the riv nuts were installed.



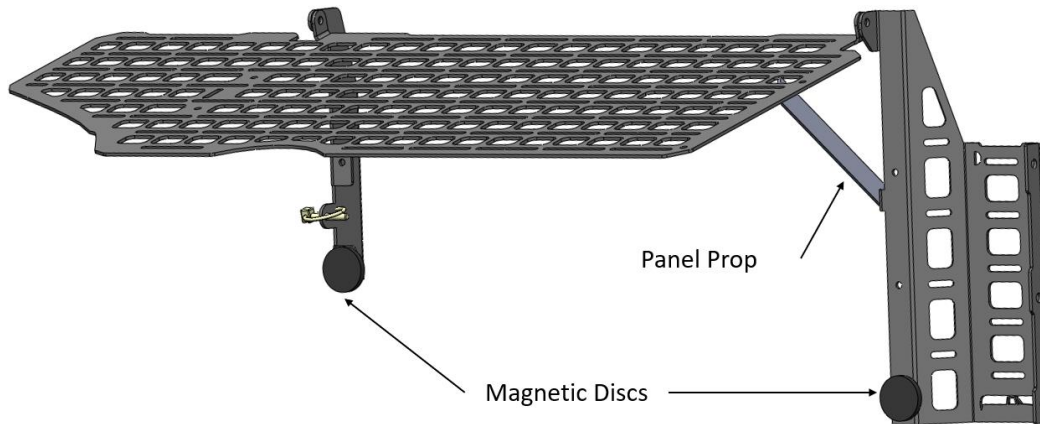
- Check that the panel swings up smoothly and freely. If needed, adjust the location of the hinge mount by moving it on the slotted holes. Tighten the 5/16" hinge bolt/nuts to the desired drag.



- Install the panel prop using a 5/16" x 3/4" bolt and nut and bronze washer and tighten to the desired drag.

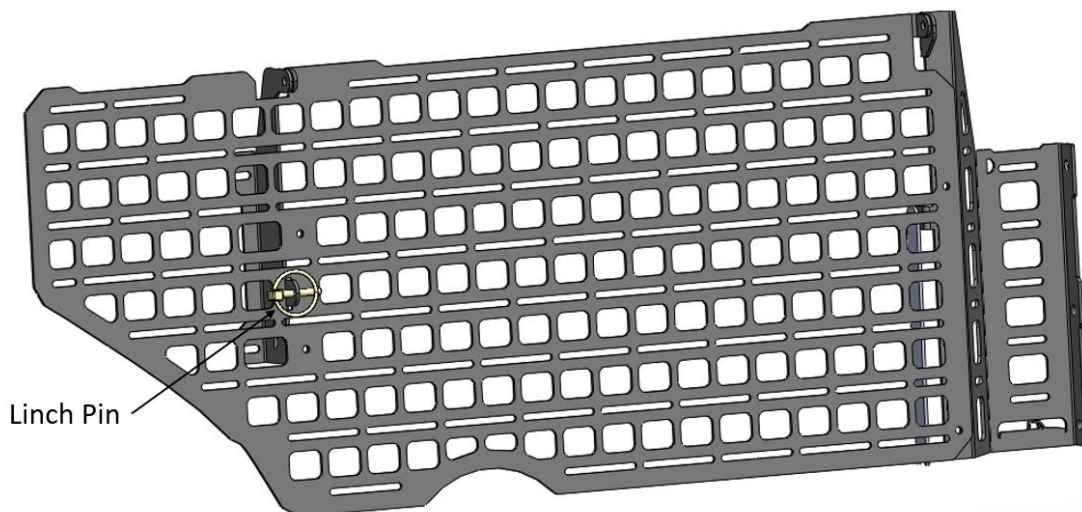


9. Install two magnetic discs in the locations shown.



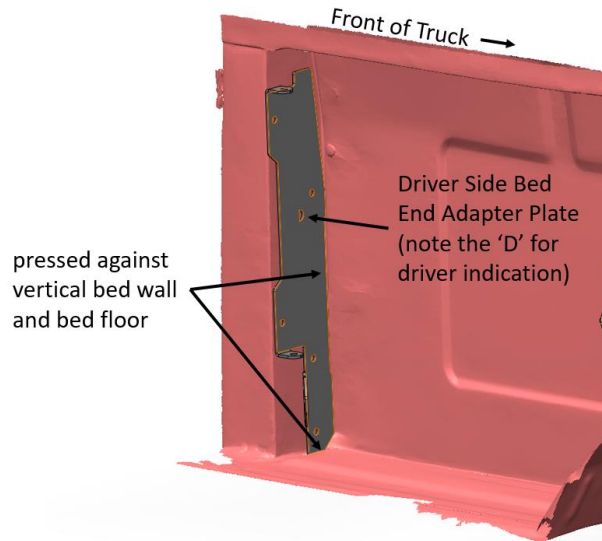
Panel in up position supported by prop

10. Lower the panel to the stowed position and install the supplied linchpin in the location shown.

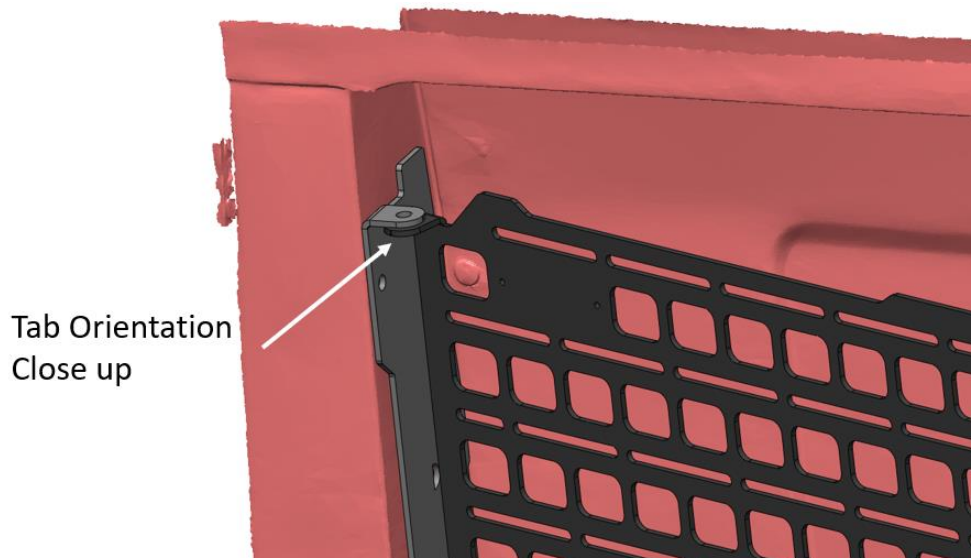
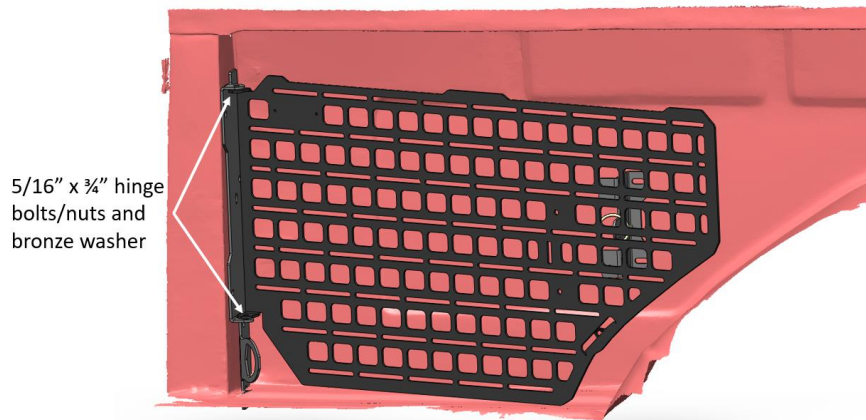


Panel Stowed with linch pin Installed

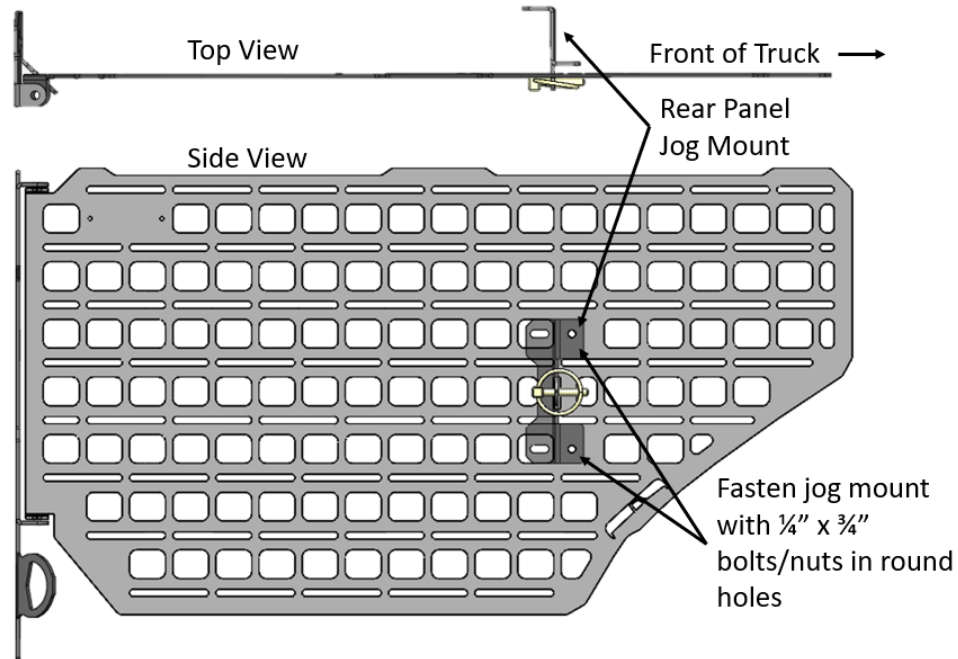
11. Locate the driver side bed end adapter in the rear of the bed as shown in the below picture. The plate should sit on the bed floor and be pressed against the vertical bed wall. Mark the 5 holes. If available, a transfer punch is ideal for doing this.



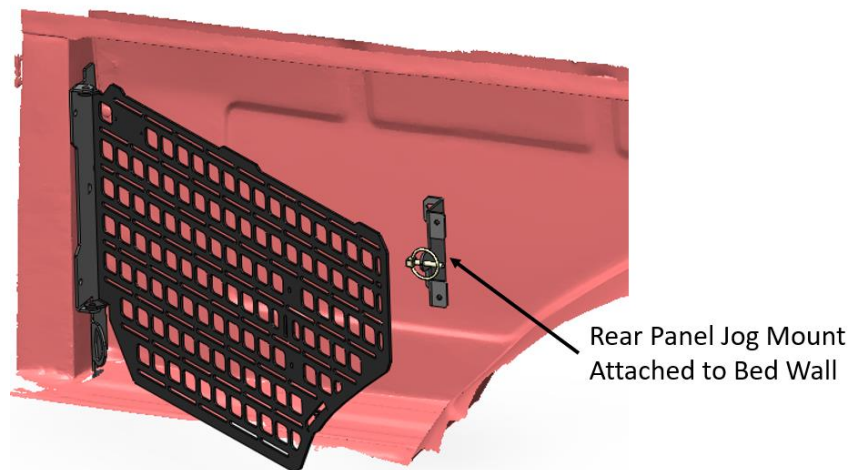
12. Drill the 5, 25/64" holes and install riv nuts in them.
13. Fasten the bed end adapter using the newly installed riv nuts and supplied 1/4" x 3/4" flanged bolts
14. Attach the driver rear panel on to the bed end adapter plate hinge tabs using two 5/16" x 3/4" bolts nuts



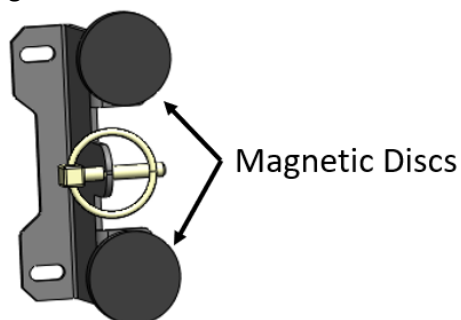
15. Attach rear panel jog mount to the rear panel at location shown using two $\frac{1}{4}$ " x $\frac{3}{4}$ " bolts and nuts



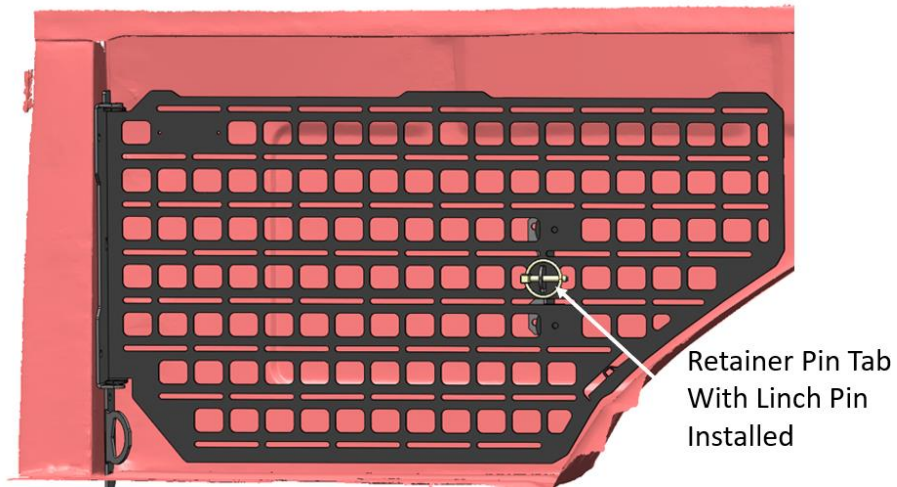
16. Press panel and jog mount assembly up against inner truck bed side and mark location of slotted holes. We recommend drilling the holes in the inner bed side in the center of the marked slotted hole location. This will allow for the greatest adjustability within the slotted holes of the jog mount.
17. Install riv nuts in drilled holes.
18. Remove two $\frac{1}{4}$ " x $\frac{3}{4}$ " bolts/nuts holding the jog mount to the panel and attached the jog mount to the inner bed wall using the same $\frac{1}{4}$ " x $\frac{3}{4}$ " bolts.



19. Attached two magnetic discs to the jog mount as shown



20. Move the panel to the stowed position and adjust alignment of jog mount so that the retainer pin tab fits freely into the slot of the panel. Install supplied linchpin.



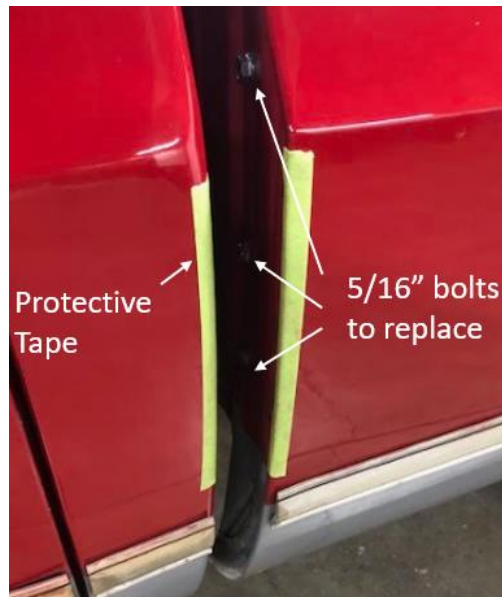
21. Repeat this procedure for the passenger side.

NOTE: Panels should be locked in their stowed position when the vehicle is moving.

GridLox Header Panel Accessory Bar Installation



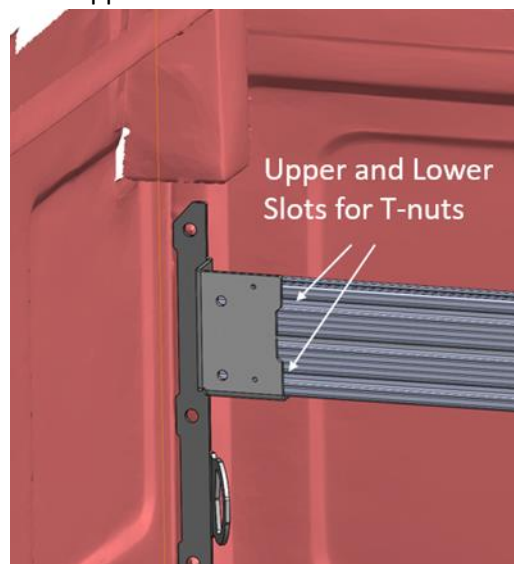
1. (**NOTE:** skip this step if it was already done for the GridLox panel installation). Start by removing the 3 lower 5/16" bolts holding the bed header panel to the truck bed sides. Replace these with the supplied, 5/16" x 1" bolts provided. Do the same for the other side of the bed.



Location of 3 Bed Header Panel Bolts to Replace

a. A few helpful tips for replacing these bolts...

- i. With the bed on the truck, they are in a tight spot. To avoid scratching paint in this area, it's helpful to put a strip of tape on the cab/bed to protect it.
 - ii. Use a ratchet with a socket to break the bolts loose and back them out some. Then switch to a wrench, ideally a ratcheting wrench. The reason for this is if you back the bolts all the way out with a ratchet/socket, the ratchet/socket will become pinched between the bed and the cab and not be able to be removed.
 - iii. If the existing bolts are rusty/crusty, it's a good idea to give them a shot of penetrating oil before removing them, especially on the thread side sticking through the inside of the bed.
 - iv. If the threads of the nuts in this location are in bad condition, it could also help to chase them with a 5/16-18 tap before installing the new bolts.
2. Locate the driver and passenger header panel adapter bracket and aluminum T-Bar extrusion.
 3. Slide in two t-nuts onto each end of the upper and lower slots of the bar

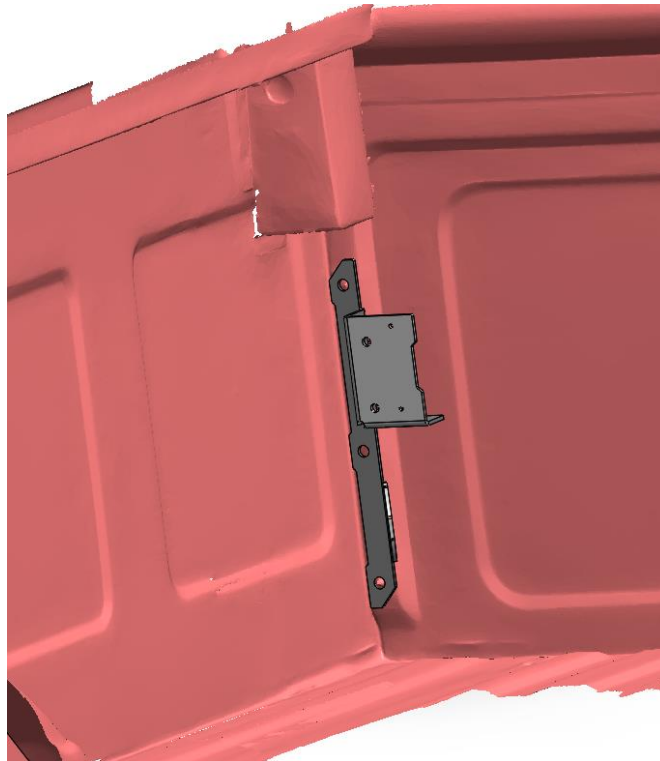


Driver Header Panel Accessory Bar Adapter Bracket



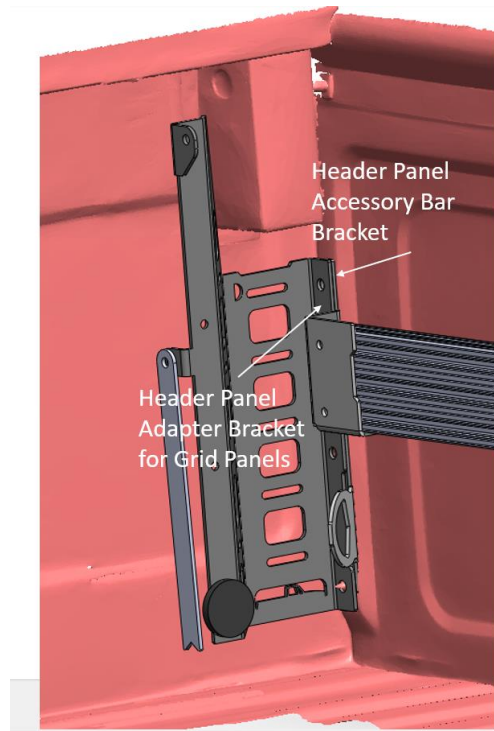
T-Nut

4. Attach the driver and passenger side header bar brackets to the Aluminum T-Bar Extrusion using supplied $\frac{1}{4}$ "x $\frac{1}{2}$ " hex key screws. **NOTE: Just loosely install these screws at this point as this will help with installing the header panel accessory bar bracket assembly**
5. Install the header panel accessory bar bracket assembly onto the 6 previously installed, $\frac{5}{16}$ "x1" bolts at each bed corner.



Driver Header Panel Accessory Bar Bracket

6. Install the $\frac{5}{16}$ " nuts onto the 3 header panel bolts at each bed corner and tighten to secure the header panel accessory bar brackets. **NOTE: if you are also installing our GridLox hinged panel system, you would want to install its header panel adapter bracket **over top of the header panel accessory bar bracket as shown in the picture below.****



Header Panel Adapter Bracket installed on top of Header Panel Accessory Bar Bracket

7. Tighten the 4, 1/4"x1/2" hex key screws to secure the aluminum T-Bar extrusion to the accessory bar brackets

You're all done! Go enjoy your newly installed Walters Engineering and Performance LLC GridLox system!

Terms and Conditions

Walters Engineering and Performance LLC's products are designed and fabricated for motorsports and off-road use only. Use of our products is at the consumer's own risk. Before using any such product, Walters Engineering and Performance LLC recommends that you check your local and state vehicle laws to be sure that your contemplated use is permitted in the applicable jurisdiction. IN NO EVENT WILL WALTERS ENGINEERING AND PERFORMANCE LLC BE LIABLE FOR ANY INCIDENTAL, CONSEQUENTIAL OR INDIRECT DAMAGES OR INJURIES.